

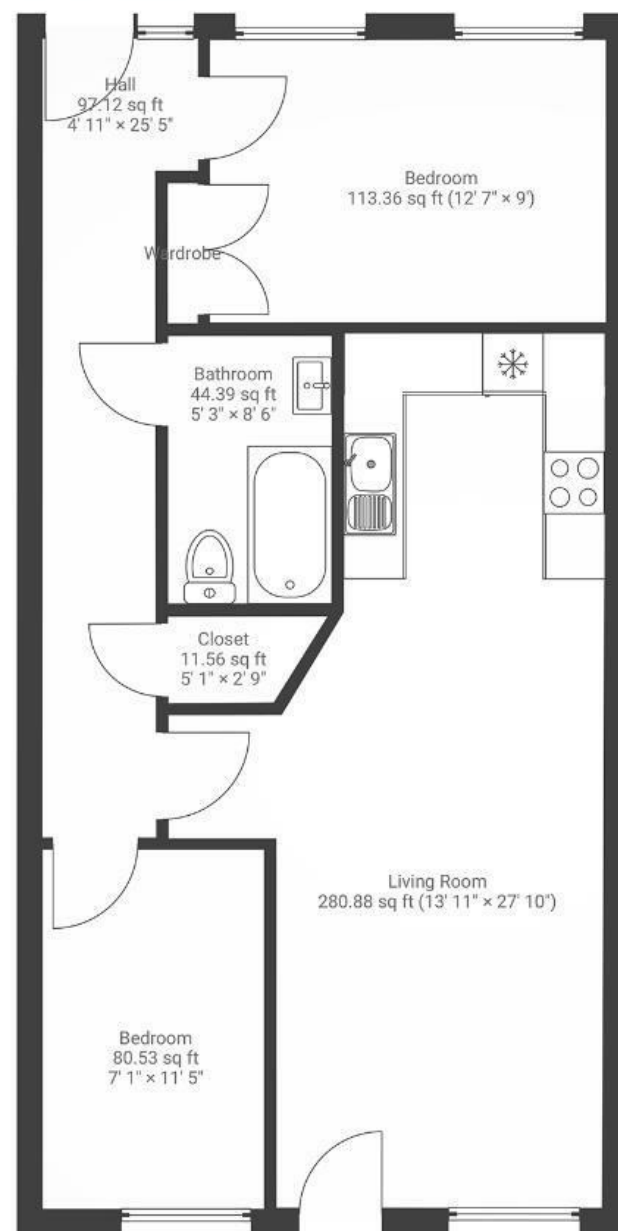
The Boot Factory

ST. GEORGE

APPROXIMATE FLOOR AREA
72 SQM / 775 SQFT



GROUND FLOOR



Boardwalk

Beaconsfield

, BRISTOL

£

£290,000



BS5 8FB

ZZZ

2 Bedrooms



1 Bathrooms

"Living here has honestly been such a joy. We love that in just a few steps one way, we can wander through Avonview Cemetery - it's peaceful and surprisingly full of life - or head a few steps the other way to St George's Park, which is always buzzing, especially in summer. Troopers Hill is just a short walk down a footpath from the end of the road - it's a gorgeous nature reserve and feels like you've escaped the city completely. Weekend mornings usually mean a stop at Orchard Café up the road - their flat whites and cinnamon buns are unbeatable (especially after a Park Run at Eastville Park!). For evenings out, we love The Loaf/Native Vine on Church Road for a glass and some small plates. One of the best things about living here though has to be the people. The neighbours in our building are genuinely lovely - there's always someone on the WhatsApp group ready to lend a cup of flour, take in a parcel, or join for quiz night at the local pub. In summer, we often head to the park for BBQs with friends - the atmosphere there on a warm evening is something special. The Boot Factory itself has been such a welcoming,

